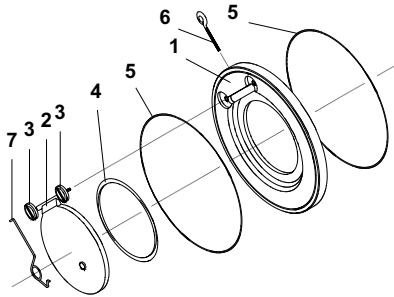


d	mm	40	50	63	75	90	110	140	160	225	280	315
DN	mm	32	40	50	65	80	100	125	150	200	250	300
G	Zoll	1 1/4"	1 1/2"	2"	2 1/2"	3"	4"	5"	6"	8"	10"	12"
A	mm	85,0	95,0	109,0	129,0	144,0	164,0	195,0	220,0	275,0	330,0	380,0
B	mm	15,0	16,0	20,0	20,0	20,0	22,0	22,0	26,0	35,0	40,0	45,0
C	mm	18,0	22,0	32,0	40,0	52,0	70,0	92,0	112,0	150,0	190,0	216,0
Open pressure	m bar S4.60 ↑	10,0	10,0	14,3	12,3	12,0	10,0	9,6	12,5	18,8	17,3	21,0
	m bar S4.60 →	1,0	1,0	1,5	1,2	1,0	1,0	1,0	1,0	1,2	1,0	1,2
	m bar S4.70 →	20,0	20,0	20,0	20,0	20,0	20,0	20,0	20,0	20,0	20,0	20,0
PN	bar	10,0	10,0	10,0	10,0	10,0	10,0	10,0	10,0	6,0	6,0	6,0

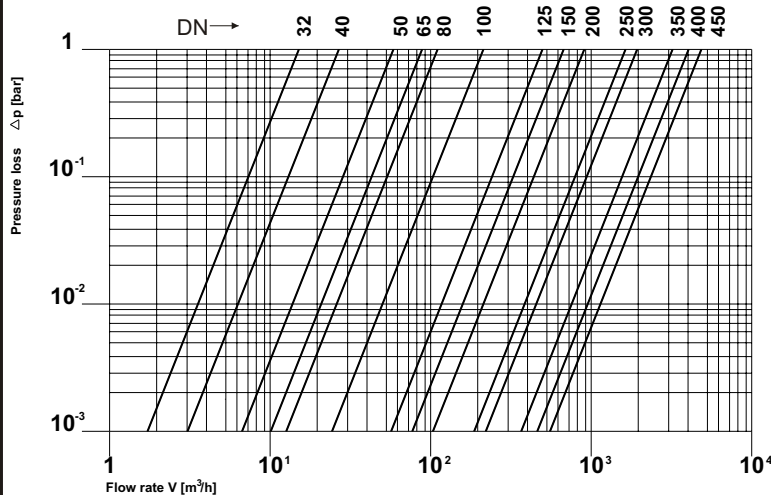
Dimensions in mm!



Parts:

1. Body
2. Disk
3. Hold down screw
4. O-Ring
5. O-Ring
6. Holding device
7. Spring

Flow - Pressure loss - diagram



General:

- Dimensions: DN 32/d40 - DN 300/d315
- Sealing material: FPM
- Body material: PVC-u - PP - PVDF
- With or without return spring

Operating pressure:

- see table Pressure - Temperature

Return spring (S4.70):

- Material: - Special steel
- Hastelloy®

Technical specification:

TYPE PRAHER
PVDF Wafer check valve S4 DN 32 d 40
Sealing material FPM
Without return spring (S4.60)

Features:

- removable valve positioning eye bolt
- easy installation between standard flanges
- jointing face with o-rings
- centering by valve body diameter
- bubble - tight shut off
- TYPE: S4.60 without return spring
- TYPE: S4.70 with return spring

Subjects to technical modification!



A large rectangular area with rounded corners, containing a series of horizontal dashed lines for technical drawing or notes.

Mounting instruction:

In case of mounting on a pump (at pressure side) please note the following:

- no direct mounting on pump flange or following bend
- for relief zone allow 5 times the nominal bore

Attention:

In case of a use of PP check valves, a special fitting has to be installed in the piping system (outlet) to guarantee the correct opening.

Note:

For pulsating flow we recommend check valves TYPE S4.70 rather than TYPE S4.60.